

OATLANDS

Lands Scholarship History

A SITE OF THE NATIONAL TRUST FOR HISTORIC PRESERVATION

OATLANDS

SITE OF ENSLAVEMENT. AGRICULTURAL HISTORY
HORTICULTURAL HISTORY. WOMEN'S HISTORY
ARCHITECTURAL HISTORY

RESOURCES

415 ACRES

OPEN SPACE TO
MAKE ACCESSIBLE

CULTURAL LANDSCAPES

BUILT AND DESIGNED
LANDSCAPES FROM THE 19TH
AND 20TH CENTURIES

RESIDENCE HOLDINGS

OATLANDS OPERATES 3 AIR
B&B AND 2+RENTALS

INFRASTRUCTURE

HISTORIC SITE IS
CURRENTLY IN A
POSITION TO HOST
EVENTS

AREAS OF WORK



LANDS

Activate an underused asset that is desired by the community

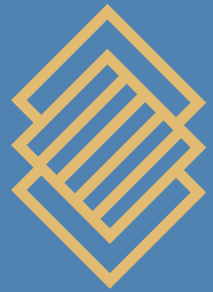
SCHOLARSHIP

Bring forward innovative work in the areas of history, architecture and the natural world.

HISTORY

Full Story Interpretation provides framework for all programs and experiences

LAND: USE METRICS



Mission
Alignment of
Revenue
Generation



Partnerships
Focused on
Community
Access



Justice-
Centered
Farming



Community
Use

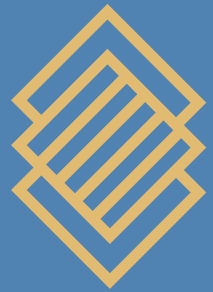
LAND

PROGRAMMING:

- OPEN TRAILS
 - AUGMENT CULTIVATED & DESIGNED SPACES
 - ENCOURAGE COMMUNITY USE: PONY CLUB, XCOUNTRY, SPROUT
 - GIRLSCOOTS/BOYSCOUTS
 - VIRGINIA NATIVE PLANT SOCIETY “BIRDWALKS”
 - MASTER GARDENERS PROGRAMMING & WORKSHOPS
 - BIRDING VIRGINIA
 - LOUDOUN COUNTY HIKING AND OUTDOOR MEETUPS
 - GARDEN INTERPRETATION, TOURS AND TALKS
 - HORTICULTURAL, AGRICULTURAL, ECOLOGICAL WORKSHOPS
-



HISTORY: USE METRICS



Mission
Alignment of
Revenue
Generation



Equitable
Partnerships



Advisory
Council

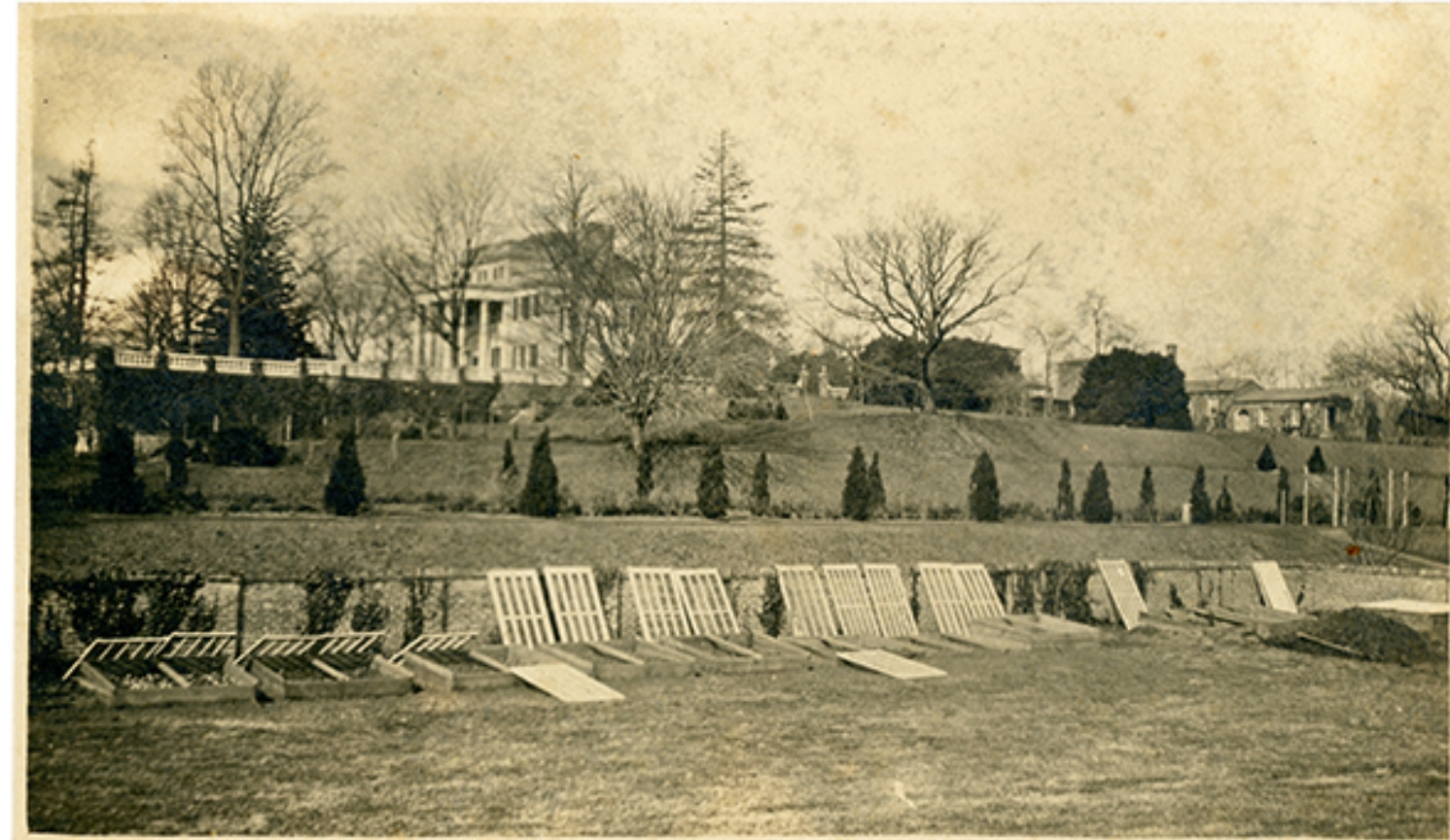


Full-Story
Interpretation

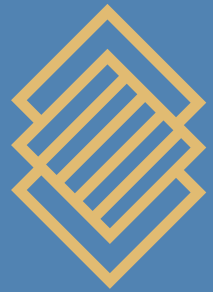
HISTORY

PROGRAMMING:

- ADVISORY COUNCIL
 - INTEGRATE DESCENDANT LEAD NARRATIVES
 - FULL STORY VALUES
 - PUBLIC HISTORIAN MODEL
 - COMMUNITY-CENTERED: FAMILY DAYS, FARM-PARTNER PROGRAMMING
 - AIR B&BS TO PARTICIPATE AS “SOCIAL IMPACT EXPERIENCES” DEPENDING ON ADVISOR COUNCIL RECOMMENDATIONS
 - DEVELOP/EXPAND K-12 PROGRAMMING
 - AUTHOR LECTURE SERIES
 - CULTURAL LANDSCAPE PROGRAMMING
-



SCHOLARSHIP: METRICS



Mission
Alignment



Scholar &
Speaker
Parity



Grounded by
Site History



Advocating
Intersectional
Study and New
Areas of
Critical Thought

SCHOLARSHIP

PROGRAMMING:

- PLACE FOR HORTICULTURAL, EDUCATIONAL, ENVIRONMENTAL, HISTORICAL & ARCHITECTURAL WORKSHOPS THAT CHALLENGE STATUS QUO AND OFFER NEW PERSPECTIVES
 - PARTNERSHIPS WITH INSTITUTIONS AND GROUPS THAT ACTIVATE THE HISTORIC SITE IN NEW WAYS CENTERED ON LEARNING
 - SYMPOSIA AND SMALLER COLLOQUIA.
-

